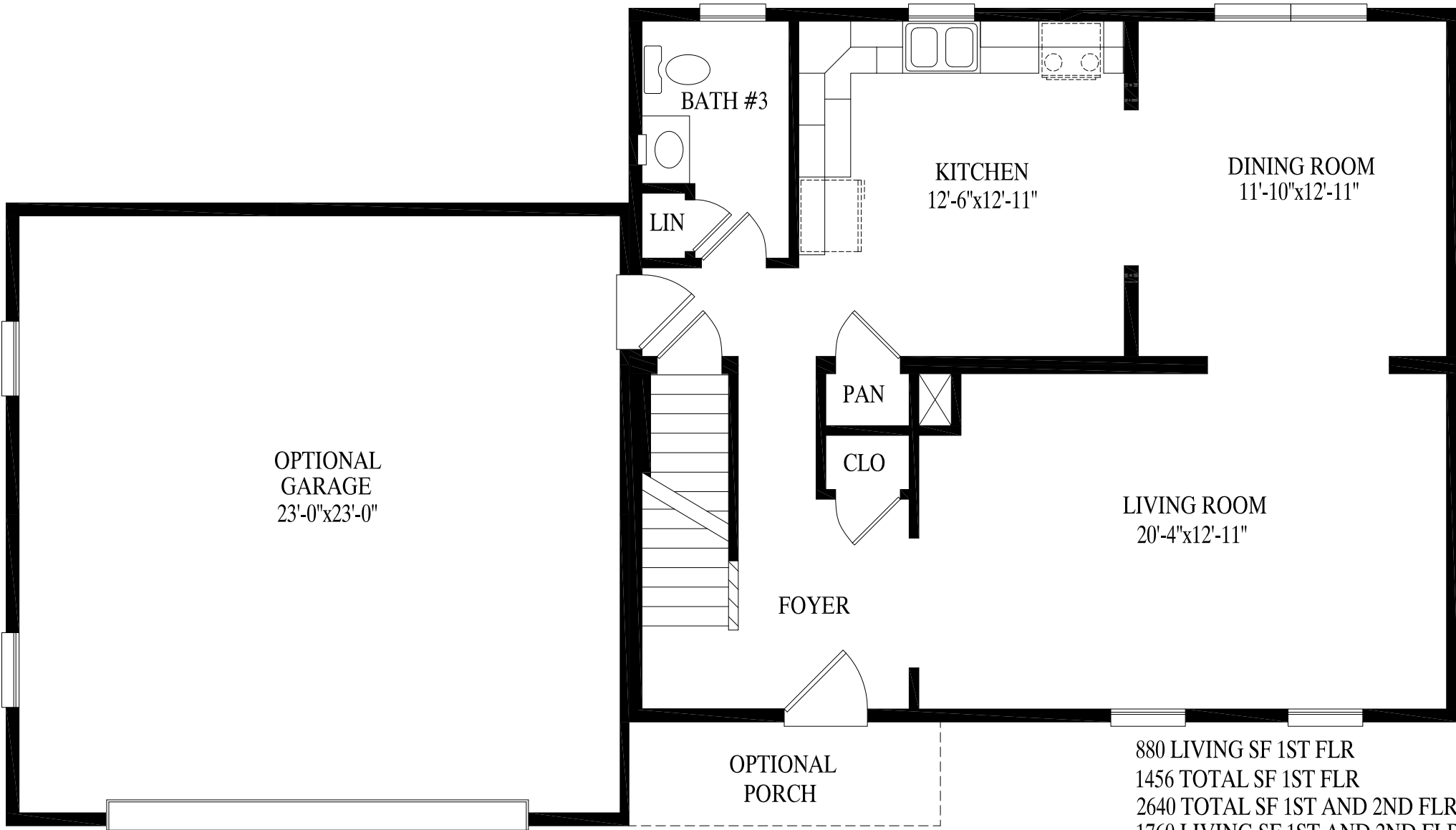




PROFESSIONAL
BUILDING
SYSTEMS, INC.



OPTIONAL
GARAGE
23'-0"x23'-0"

BATH #3

LIN

KITCHEN
12'-6"x12'-11"

DINING ROOM
11'-10"x12'-11"

PAN

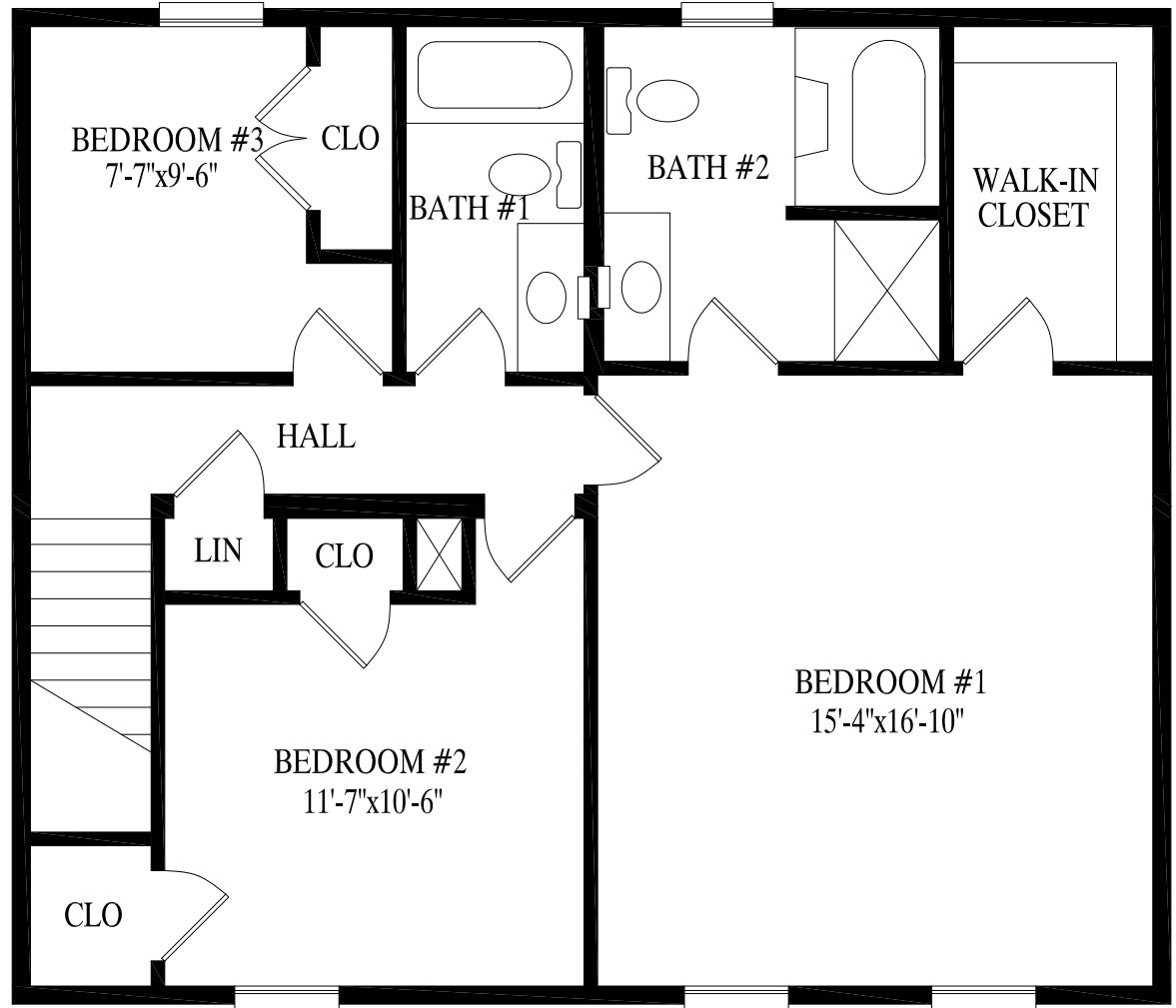
CLO

LIVING ROOM
20'-4"x12'-11"

FOYER

OPTIONAL
PORCH

880 LIVING SF 1ST FLR
1456 TOTAL SF 1ST FLR
2640 TOTAL SF 1ST AND 2ND FLR
1760 LIVING SF 1ST AND 2ND FLR



880 LIVING SF 1ST FLR
 1456 TOTAL SF 1ST FLR
 2640 TOTAL SF 1ST AND 2ND FLR
 1760 LIVING SF 1ST AND 2ND FLR