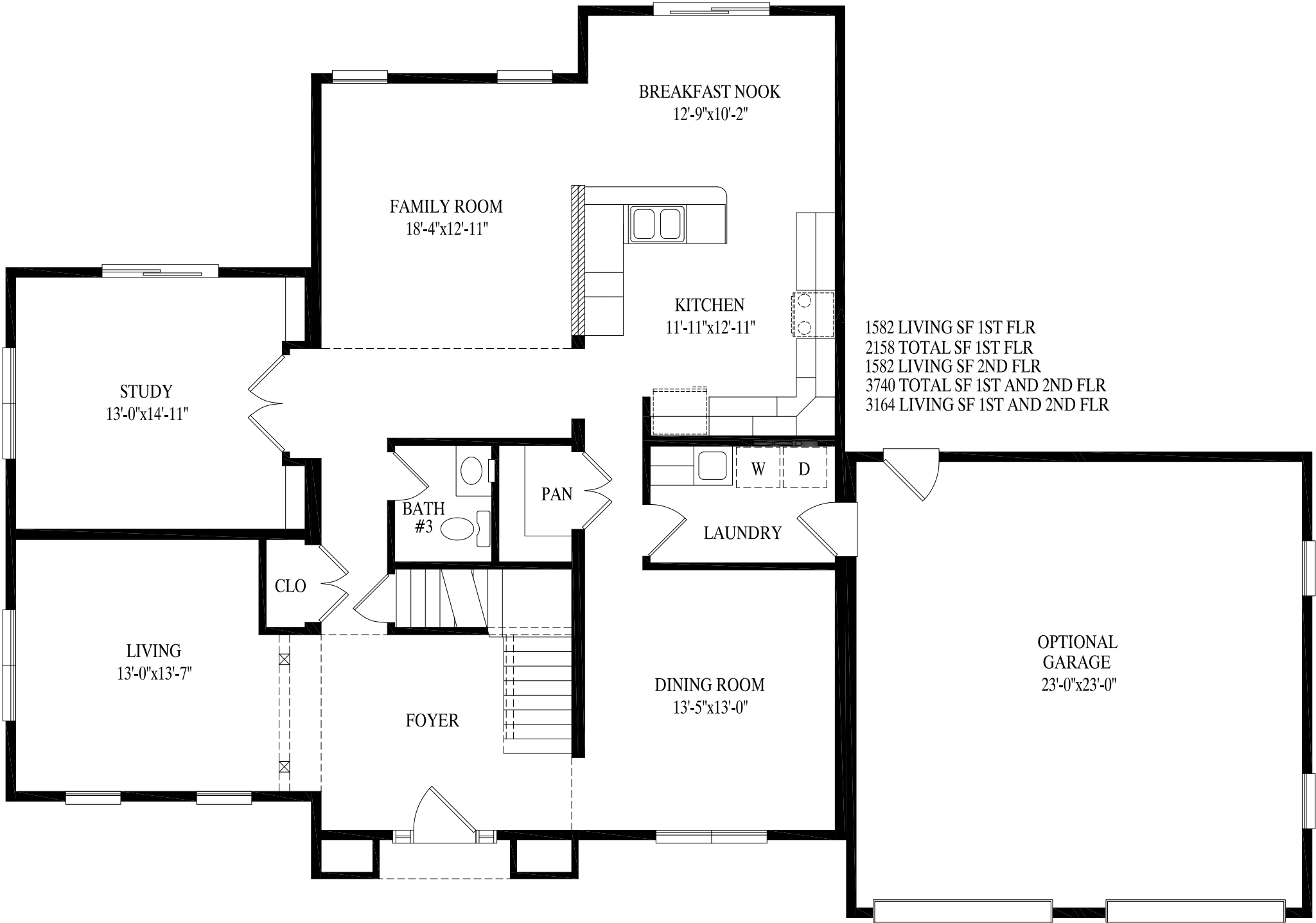




**PROFESSIONAL
BUILDING
SYSTEMS, INC.**



1582 LIVING SF 1ST FLR
2158 TOTAL SF 1ST FLR
1582 LIVING SF 2ND FLR
3740 TOTAL SF 1ST AND 2ND FLR
3164 LIVING SF 1ST AND 2ND FLR

OPTIONAL
GARAGE
23'-0"x23'-0"



1582 LIVING SF 1ST FLR
 2158 TOTAL SF 1ST FLR
 1582 LIVING SF 2ND FLR
 3740 TOTAL SF 1ST AND 2ND FLR
 3164 LIVING SF 1ST AND 2ND FLR