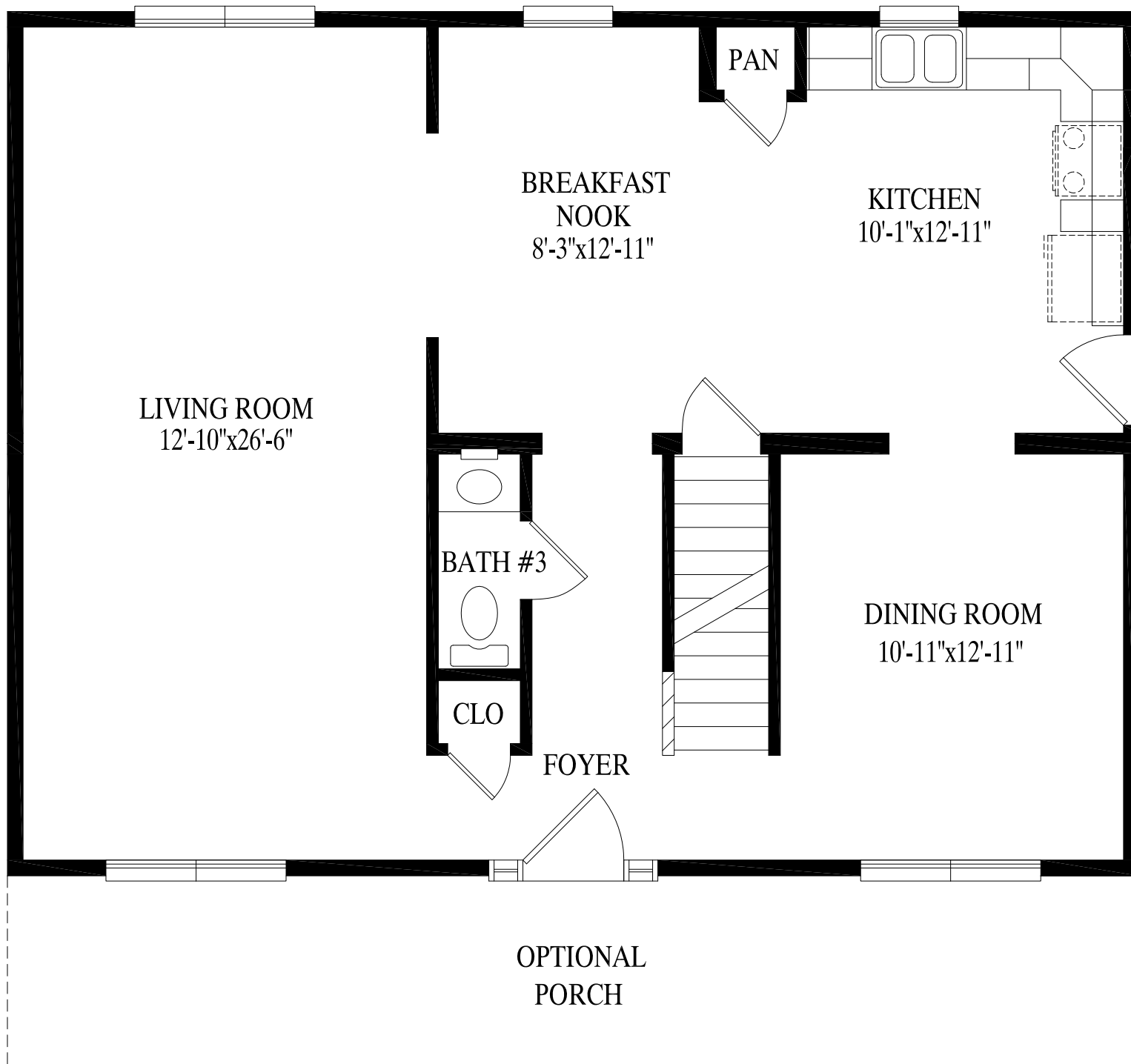
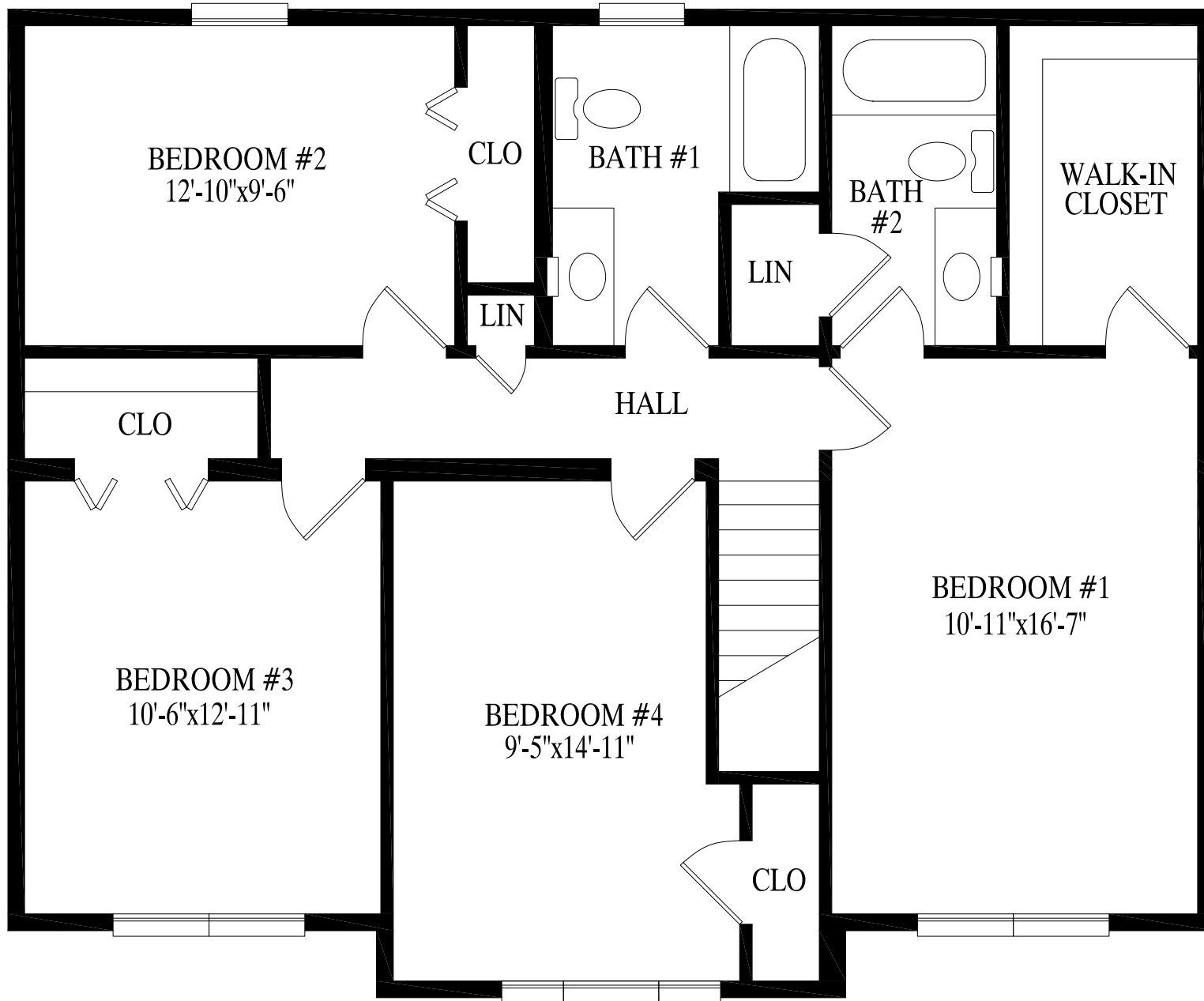




**PROFESSIONAL  
BUILDING  
SYSTEMS, INC.**



990 LIVING SF 1ST FLR  
 1018 LIVING SF 2ND FLR  
 2008 LIVING SF 1ST AND 2ND FLR



990 LIVING SF 1ST FLR  
1018 LIVING SF 2ND FLR  
2008 LIVING SF 1ST AND 2ND FLR