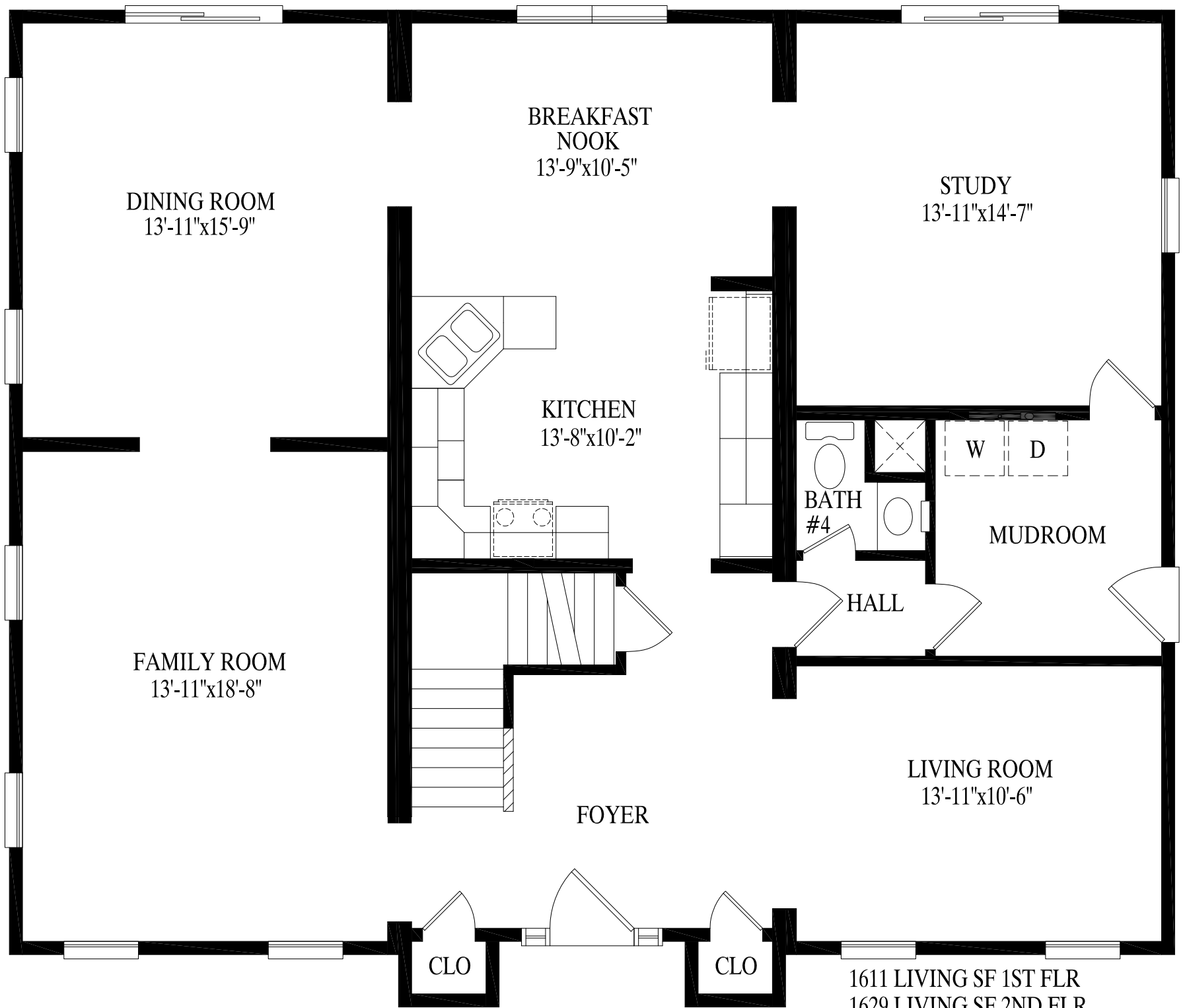




**PROFESSIONAL
BUILDING
SYSTEMS, INC.**



DINING ROOM
13'-11"x15'-9"

BREAKFAST
NOOK
13'-9"x10'-5"

STUDY
13'-11"x14'-7"

KITCHEN
13'-8"x10'-2"

BATH
#4

W D

MUDROOM

HALL

FAMILY ROOM
13'-11"x18'-8"

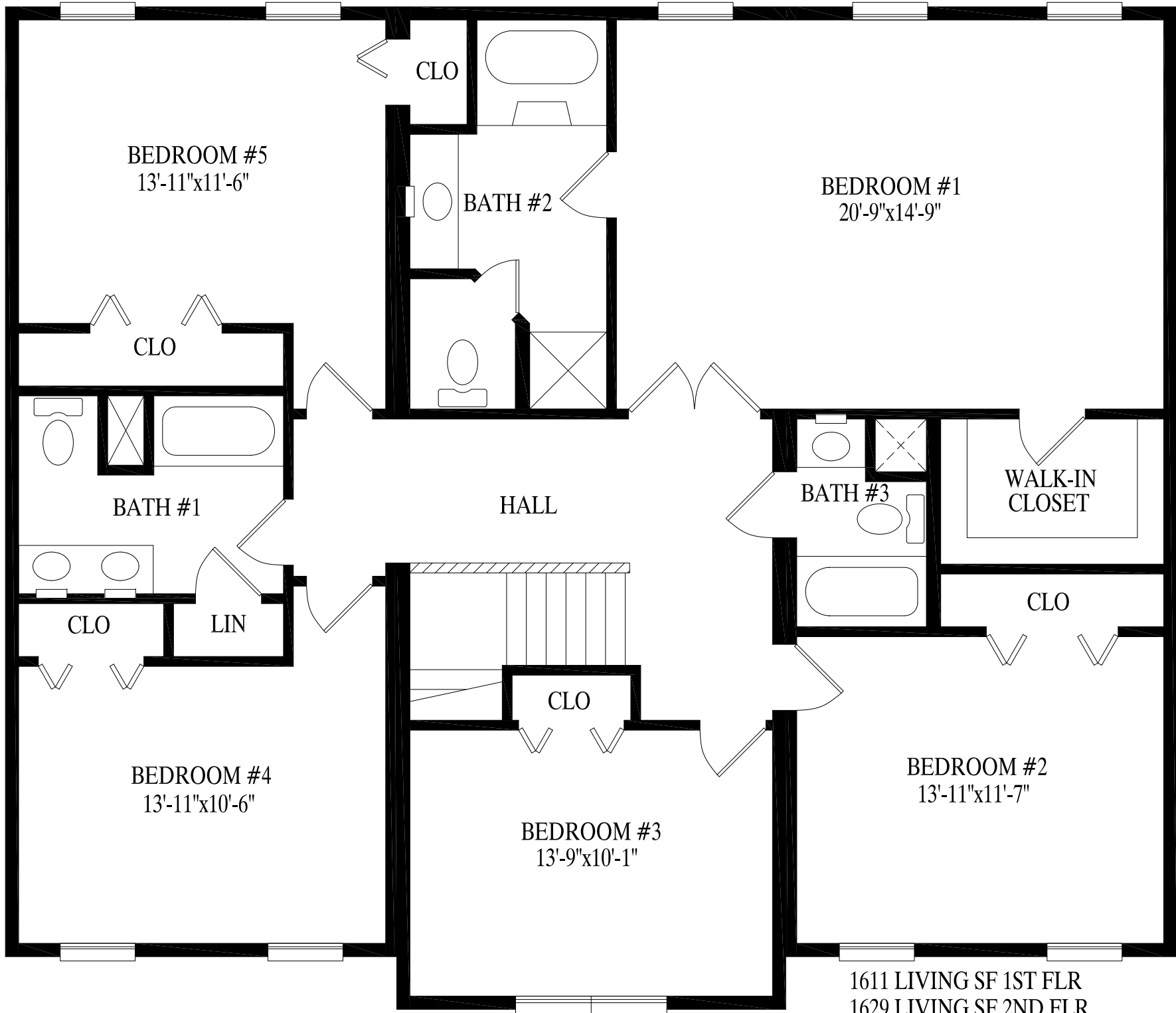
FOYER

LIVING ROOM
13'-11"x10'-6"

CLO

CLO

1611 LIVING SF 1ST FLR
1629 LIVING SF 2ND FLR
3240 LIVING SF 1ST AND 2ND FLR



1611 LIVING SF 1ST FLR
 1629 LIVING SF 2ND FLR
 3240 LIVING SF 1ST AND 2ND FLR