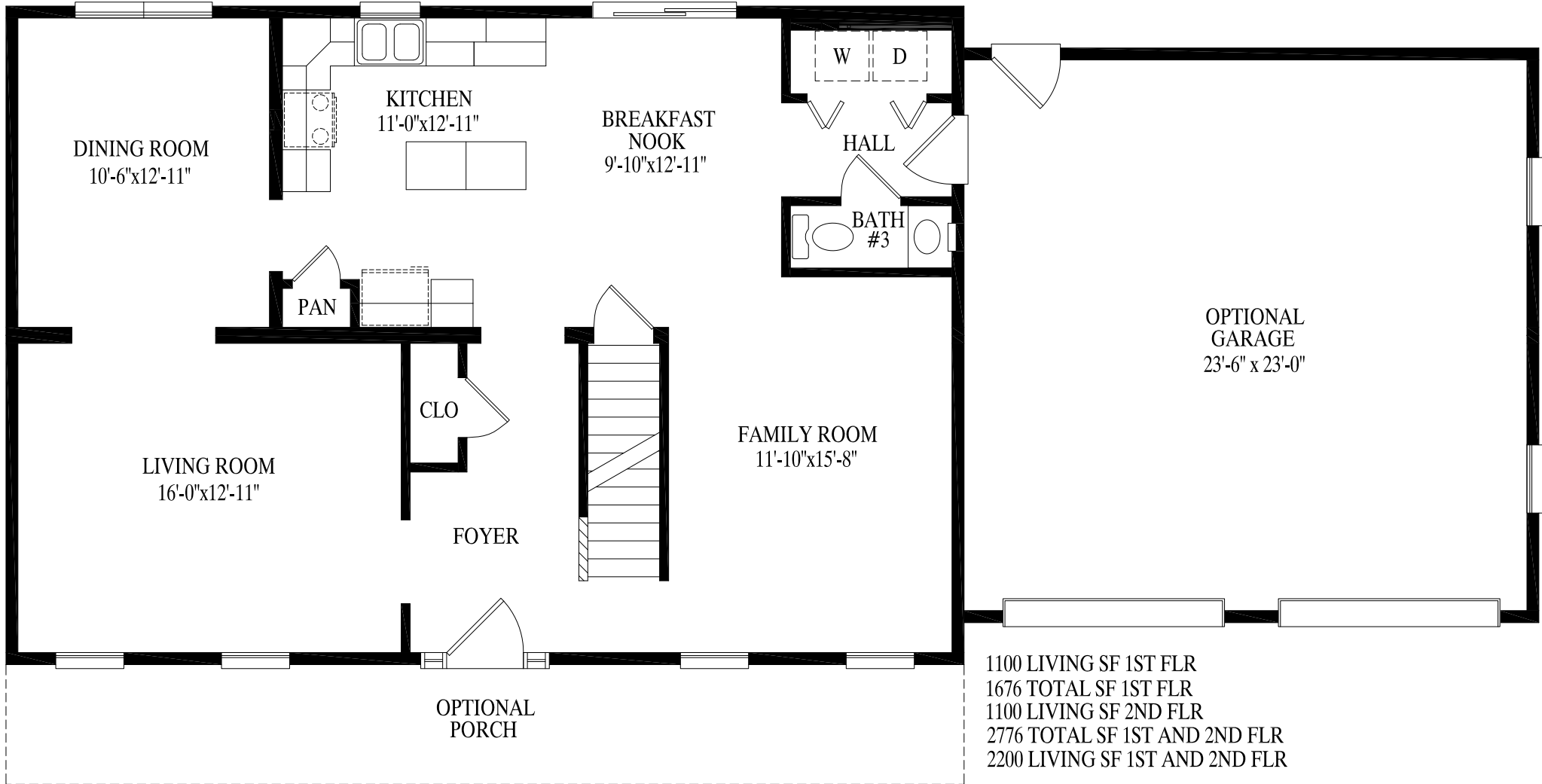
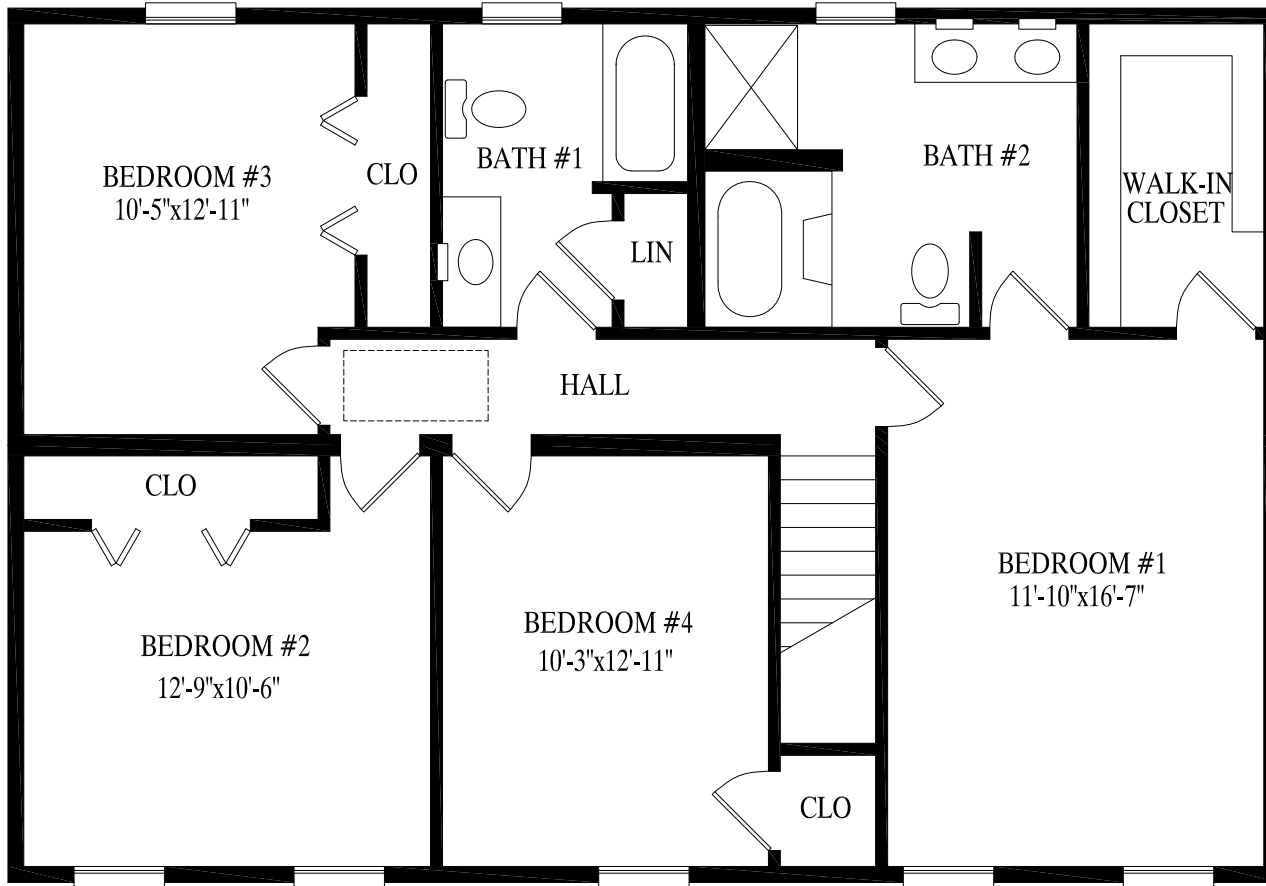




**PROFESSIONAL
BUILDING
SYSTEMS, INC.**





1100 LIVING SF 1ST FLR
 1676 TOTAL SF 1ST FLR
 1100 LIVING SF 2ND FLR
 2776 TOTAL SF 1ST AND 2ND FLR
 2200 LIVING SF 1ST AND 2ND FLR