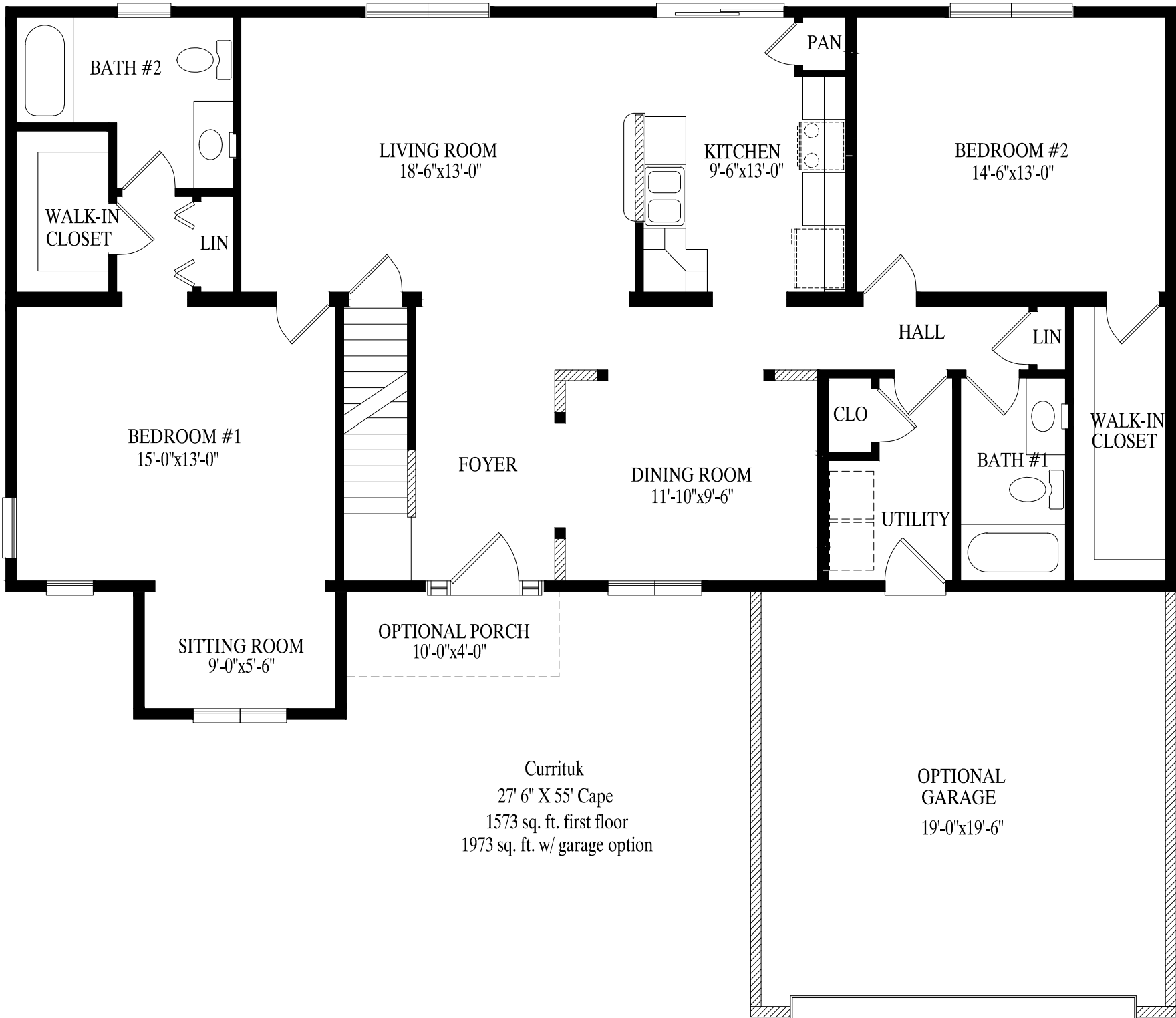


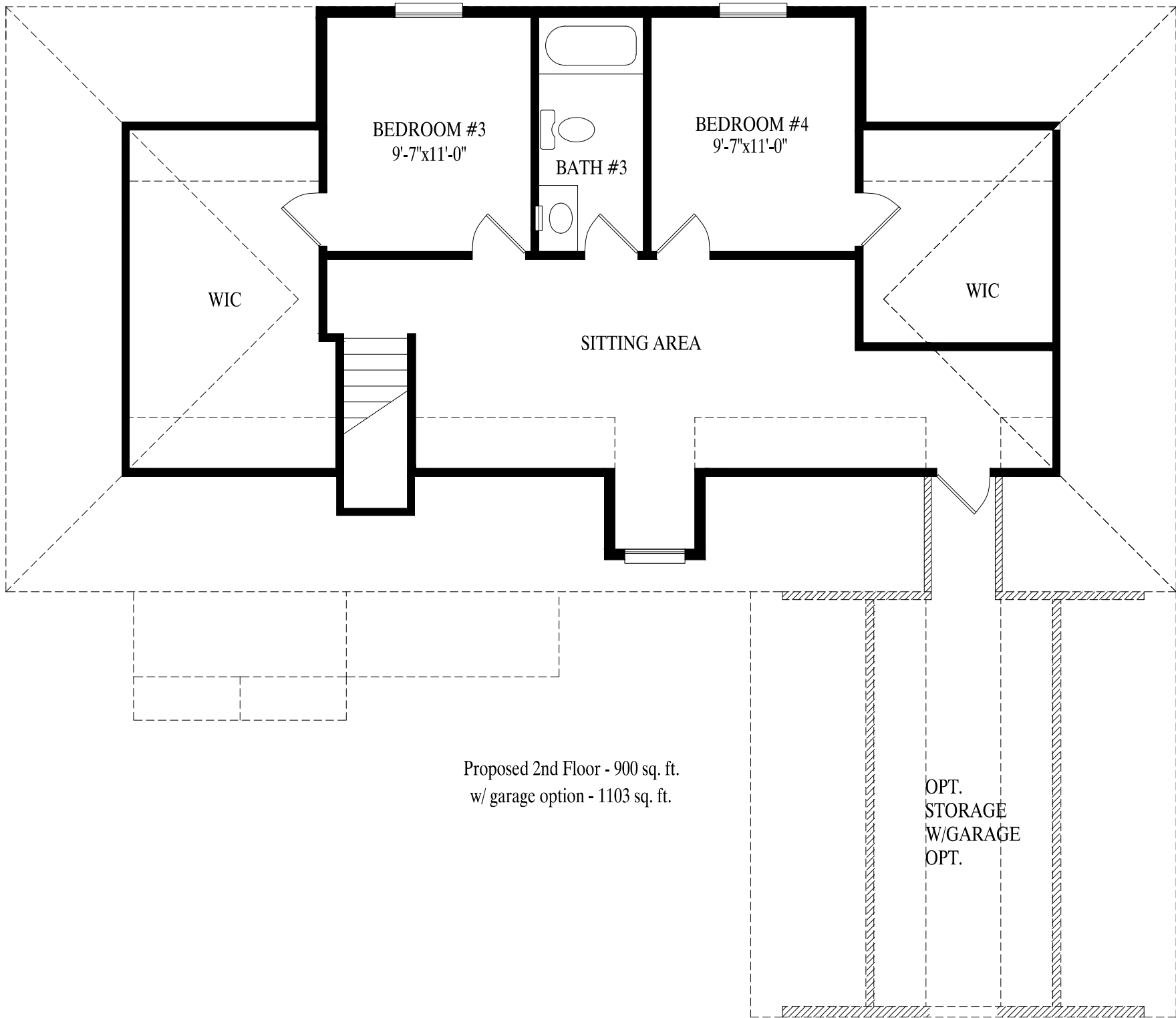


PROFESSIONAL
BUILDING
SYSTEMS, INC.



Currituk
 27' 6" X 55' Cape
 1573 sq. ft. first floor
 1973 sq. ft. w/ garage option

OPTIONAL
 GARAGE
 19'-0"x19'-6"



BEDROOM #3
9'-7"x11'-0"

BEDROOM #4
9'-7"x11'-0"

BATH #3

WIC

WIC

SITTING AREA

Proposed 2nd Floor - 900 sq. ft.
w/ garage option - 1103 sq. ft.

OPT.
STORAGE
W/GARAGE
OPT.