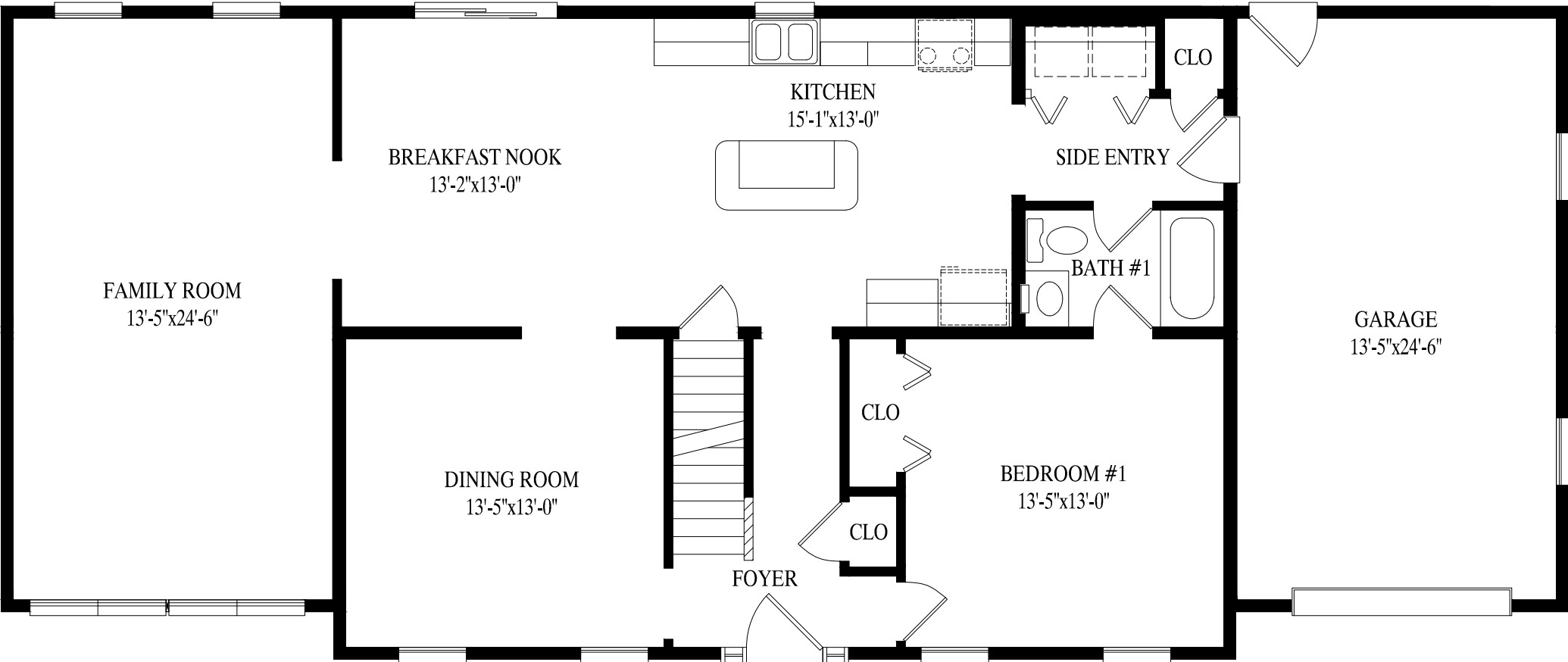




PROFESSIONAL
BUILDING
SYSTEMS, INC.



FAMILY ROOM
13'-5"x24'-6"

BREAKFAST NOOK
13'-2"x13'-0"

KITCHEN
15'-1"x13'-0"

DINING ROOM
13'-5"x13'-0"

FOYER

BEDROOM #1
13'-5"x13'-0"

BATH #1

SIDE ENTRY

GARAGE
13'-5"x24'-6"

OPT. PORCH
14'-0" X 6'-0"

Bar Harbor
27' 6" X 52' Cape
1402 sq. ft. first floor
1759 sq. ft. w/ garage option

BEDROOM #3
23'-4"x13'-11"

BEDROOM #2
23'-4"x13'-11"

CLO

CLO

HALL

BATH #2

WALK-IN
CLO

WALK-IN
CLO

Proposed 2nd Floor - 875 sq. ft.
w/ garage option - 1079 sq. ft.

